



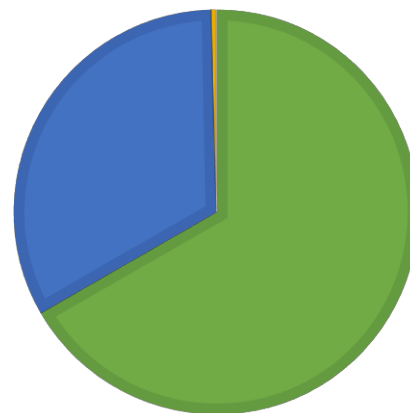
Sample Name **Durban Harle Tsu**
 Batch #: 843-011116-1
 Customer Name OM Extracts
 Sample ID: PD160119-023
 Sample Type: Concentrate
 Date Tested: 1/22/2016
 Expiration Date: 10/1/2016

Potency Test

Cannabinoid Summary

Total THC	■ Δ9THC+THCa	54.31%
<i>Total Potential Δ9THC</i>	480.899 mg/g	48.09%
Total CBD	■ CBD+CBDa	26.88%
<i>Total Potential CBD</i>	236.39 mg/g	23.64%
Total CBN	■ Total CBN	0.27%
<i>Total Potential CBN</i>	2.7 mg/g	0.27%

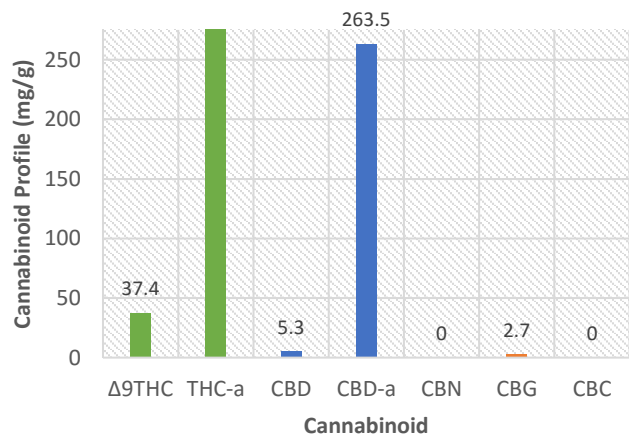
Cannabinoid Ratio
■ Total THC ■ Total CBD ■ Total CBN



Full Cannabinoid Profile

Tetrahydrocannabinol	Δ9THC	3.74%
<i>Total Potential</i>	37.4 mg/g	
Tetrahydrocannabinolic Acid	THC-a	50.57%
<i>Total Potential</i>	505.7 mg/g	
Cannabidiol	CBD	0.53%
<i>Total Potential</i>	5.3 mg/g	
Cannabidiolic Acid	CBD-a	26.35%
<i>Total Potential</i>	263.5 mg/g	
Cannabinol	CBN	0.27%
<i>Total Potential</i>	0 mg/g	
Cannabigerol	CBG	0.27%
<i>Total Potential</i>	2.7 mg/g	
Cannabichromeone	CBC	0.00%
<i>Total Potential</i>	0 mg/g	
Total Active Cannabinoids		81.73%
<i>Total Potential</i>	722.688 mg/g	

Cannabinoid Summary



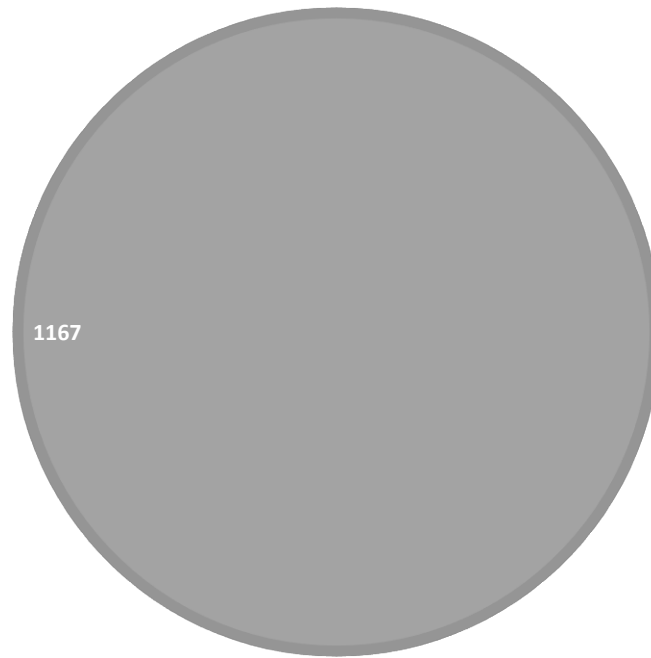
Residual Solvent

Residual Solvent Summary

Total Residual Solvent 1167 ppm

Methanol	ND	ppm
Ethanol	1167	ppm
Acetone	ND	ppm
Isopropanol	ND	ppm
Acetonitrile	ND	ppm
Methylene Chloride	ND	ppm
n-Hexane	ND	ppm
Tetrahydrofuran	ND	ppm
Benzene	ND	ppm
Heptane	ND	ppm
Toluene	ND	ppm
Ethane	ND	ppm
Propane	ND	ppm
Isobutane	ND	ppm
Butane	ND	ppm
Isopentane	ND	ppm

Residual Solvent Summary



Terpene Profile

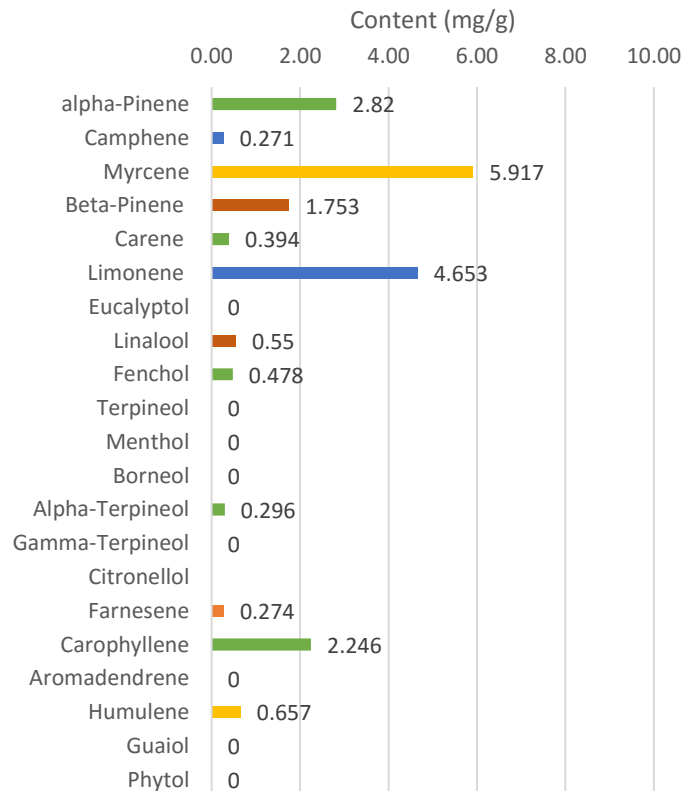
Terpene Summary

Total Available Terpenes 2.03%
 Total Potential 20.309 mg/g

* Out of Range

alpha-Pinene	2.82 mg/g	0.28%
Camphene	0.271 mg/g	0.03%
Myrcene	5.917 mg/g	0.59%
Beta-Pinene	1.753 mg/g	0.18%
Carene	0.394 mg/g	0.04%
Limonene	4.653 mg/g	0.47%
Eucalyptol	0 mg/g	0.00%
Linalool	0.55 mg/g	0.06%
Fenchol	0.478 mg/g	0.05%
Terpineol	0 mg/g	0.00%
Menthol	0 mg/g	0.00%
Borneol	0 mg/g	0.00%
Alpha-Terpineol	0.296 mg/g	0.03%
Gamma-Terpineol	0 mg/g	0.00%
Citronellol	0 mg/g	0.00%
Farnesene	0.274 mg/g	0.03%
Carophyllene	2.246 mg/g	0.22%
Aromadendrene	0 mg/g	0.00%
Humulene	0.657 mg/g	0.07%
Guaiol	0 mg/g	0.00%
Phytol	0 mg/g	0.00%

Terpene Summary



Microbial Analysis

Microbial Summary

Total Mold and Mildew	<10,000 cfu/g	Pass
Total Aerobic Plate Count	<10,000 cfu/g	Pass

Pesticide Screening

Pesticide Summary

Total Pesticide Content ND ppm Pass OR Limit: 0.1ppm

Flonicamid	ND ppm	Azoxystrobin	ND ppm	Clofentazine	ND ppm
Oxamyl	ND ppm	Malathion	ND ppm	Spionsad D	ND ppm
Methomyl	ND ppm	Acequinocyl	ND ppm	Piperonyl Butoxide	ND ppm
Thiamethoxam	ND ppm	Methiocarb	ND ppm	Chlopyrifos	ND ppm
Dimethoate	ND ppm	Paclobutrazol	ND ppm	Spiromensifen	ND ppm
Imidacloprid	ND ppm	Fludioxonil	ND ppm	Hexythiazox	ND ppm
Acetamiprid	ND ppm	Boscalid	ND ppm	Etoxazole	ND ppm
Alidcarb	ND ppm	Bifenazate	ND ppm	Cypemethrin	ND ppm
Thiacloprid	ND ppm	Myclobutanil	ND ppm	Pyridaben	ND ppm
Propoxur	ND ppm	Spirotetramat	ND ppm	Fenpyroximate	ND ppm
Dichlorvos	ND ppm	Fipronil	ND ppm	Bifenthrin	ND ppm
Carbofuran	ND ppm	Fenoxycarb	ND ppm	Etofenprox	ND ppm
Imazalil	ND ppm	Kresoxim-methyl	ND ppm		
Carbaryl	ND ppm	Tebuconazole	ND ppm		
Parathion-methyl	ND ppm	Diazanone	ND ppm		
Metalaxyl	ND ppm	Propiconazole	ND ppm		
Chlorantriliprole	ND ppm	Spinosad A	ND ppm		
Spiroxamine	ND ppm	Pyrethrin 1	ND ppm		
Phosemet	ND ppm	Trifloxystrobin	ND ppm		

Moisture Analysis

Moisture Summary

Mass(g)	%Solid	%Water
Received: NT		
Dehydrated : NT		

Information

TEST	LOQ	unit
Terpene	100	ppm
Residual Solvent	80	ppm
Pesticides	0.01	ppm
Mold/Mildew	100	cfu/g
Potency	0.1	%