



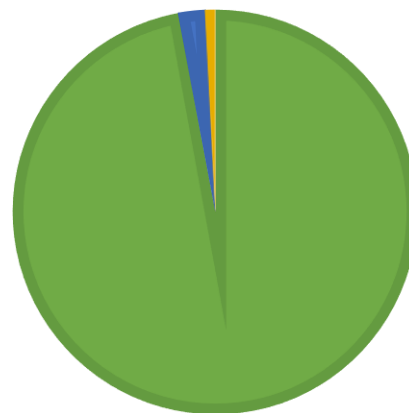
**Sample Name** Dream Lotus  
**Batch #:** 412-012716-2  
**Customer Name** OM Extracts  
**Sample ID:** PD160202-015  
**Sample Type:** Concentrate  
**Date Tested:** 2/5/2016  
**Expiration Date:** 5/5/2016

## Potency Test

### Cannabinoid Summary

<b>Total THC</b>	<b>Δ9THC+THCa</b>	<b>79.00%</b>
<i>Total Potential Δ9THC</i>	696.717 mg/g	69.67%
<b>Total CBD</b>	<b>CBD+CBDa</b>	<b>1.75%</b>
<i>Total Potential CBD</i>	15.3475 mg/g	1.53%
<b>Total CBN</b>	<b>Total CBN</b>	<b>0.58%</b>
<i>Total Potential CBN</i>	5.8 mg/g	0.58%

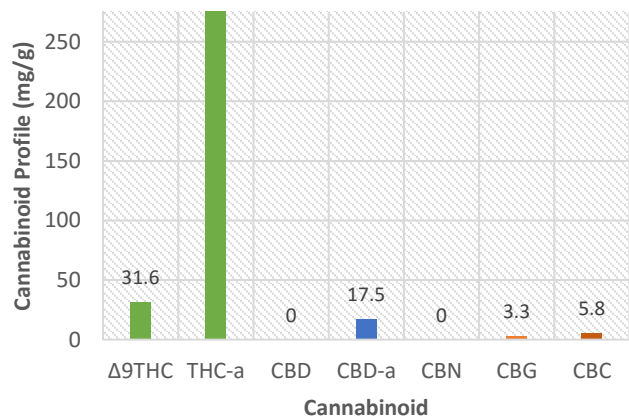
Cannabinoid Ratio



### Full Cannabinoid Profile

<b>Tetrahydrocannabinol</b>	<b>Δ9THC</b>	<b>3.16%</b>
<i>Total Potential</i>	31.6 mg/g	
<b>Tetrahydrocannabinolic Acid</b>	<b>THC-a</b>	<b>75.84%</b>
<i>Total Potential</i>	758.4 mg/g	
<b>Cannabidiol</b>	<b>CBD</b>	<b>0.00%</b>
<i>Total Potential</i>	0 mg/g	
<b>Cannabidiolic Acid</b>	<b>CBD-a</b>	<b>1.75%</b>
<i>Total Potential</i>	17.5 mg/g	
<b>Cannabinol</b>	<b>CBN</b>	<b>0.58%</b>
<i>Total Potential</i>	0 mg/g	
<b>Cannabigerol</b>	<b>CBG</b>	<b>0.33%</b>
<i>Total Potential</i>	3.3 mg/g	
<b>Cannabichromeone</b>	<b>CBC</b>	<b>0.58%</b>
<i>Total Potential</i>	5.8 mg/g	
<b>Total Active Cannabinoids</b>		<b>82.24%</b>
<i>Total Potential</i>	726.964 mg/g	

### Cannabinoid Summary



# Residual Solvent

## Residual Solvent Summary

Total Residual Solvent	ND	ppm
Methanol	ND	ppm
Ethanol	ND	ppm
Acetone	ND	ppm
Isopropanol	ND	ppm
Acetonitrile	ND	ppm
Methylene Chloride	ND	ppm
n-Hexane	ND	ppm
Tetrahydrofuran	ND	ppm
Benzene	ND	ppm
Heptane	ND	ppm
Toluene	ND	ppm
Ethane	ND	ppm
Propane	ND	ppm
Isobutane	ND	ppm
Butane	ND	ppm
Isopentane	ND	ppm

## Residual Solvent Summary

# Terpene Profile

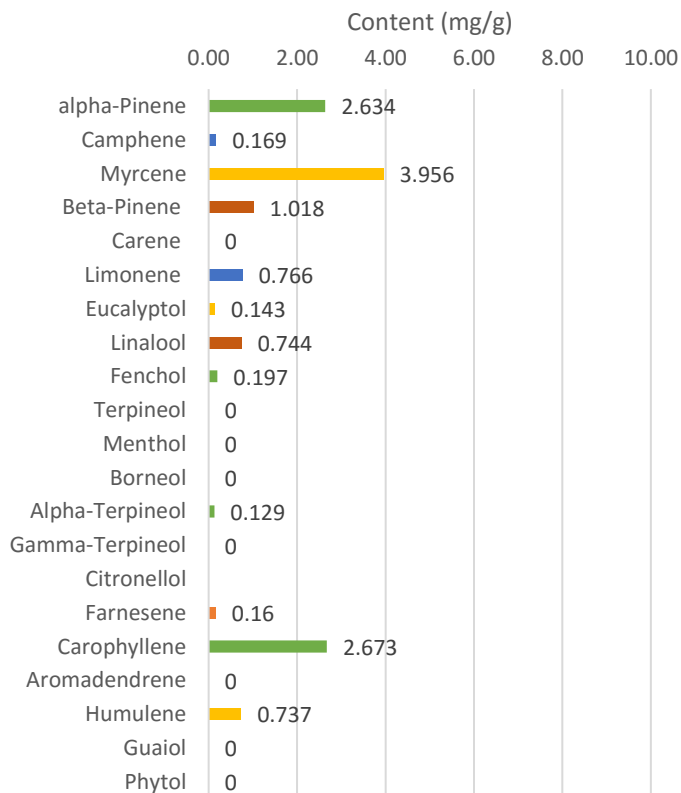
## Terpene Summary

Total Available Terpenes	1.33%
Total Potential	13.326 mg/g

\* Out of Range

alpha-Pinene	2.634 mg/g	0.26%
Camphene	0.169 mg/g	0.02%
Myrcene	3.956 mg/g	0.40%
Beta-Pinene	1.018 mg/g	0.10%
Carene	0 mg/g	0.00%
Limonene	0.766 mg/g	0.08%
Eucalyptol	0.143 mg/g	0.01%
Linalool	0.744 mg/g	0.07%
Fenchol	0.197 mg/g	0.02%
Terpineol	0 mg/g	0.00%
Menthol	0 mg/g	0.00%
Borneol	0 mg/g	0.00%
Alpha-Terpineol	0.129 mg/g	0.01%
Gamma-Terpineol	0 mg/g	0.00%
Citronellol	0 mg/g	0.00%
Farnesene	0.16 mg/g	0.02%
Carophyllene	2.673 mg/g	0.27%
Aromadendrene	0 mg/g	0.00%
Humulene	0.737 mg/g	0.07%
Guaiol	0 mg/g	0.00%
Phytol	0 mg/g	0.00%

## Terpene Summary



# Microbial Analysis

## Microbial Summary

Total Mold and Mildew	<10,000 cfu/g	Pass
Total Aerobic Plate Count	<10,000 cfu/g	Pass

# Pesticide Screening

## Pesticide Summary

Total Pesticide Content            ND ppm            Pass            OR Limit: 0.1ppm

Flonicamid	ND ppm	Azoxystrobin	ND ppm	Clofentazine	ND ppm
Oxamyl	ND ppm	Malathion	ND ppm	Spionsad D	ND ppm
Methomyl	ND ppm	Acequinocyl	ND ppm	Piperonyl Butoxide	ND ppm
Thiamethoxam	ND ppm	Methiocarb	ND ppm	Chlopyrifos	ND ppm
Dimethoate	ND ppm	Paclobutrazol	ND ppm	Spiromensifen	ND ppm
Imidacloprid	ND ppm	Fludioxonil	ND ppm	Hexythiazox	ND ppm
Acetamiprid	ND ppm	Boscalid	ND ppm	Etoxazole	ND ppm
Alidcarb	ND ppm	Bifenazate	ND ppm	Cypemethrin	ND ppm
Thiacloprid	ND ppm	Myclobutanil	ND ppm	Pyridaben	ND ppm
Propoxur	ND ppm	Spirotetramat	ND ppm	Fenpyroximate	ND ppm
Dichlorvos	ND ppm	Fipronil	ND ppm	Bifenthrin	ND ppm
Carbofuran	ND ppm	Fenoxycarb	ND ppm	Etofenprox	ND ppm
Imazalil	ND ppm	Kresoxim-methyl	ND ppm		
Carbaryl	ND ppm	Tebuconazole	ND ppm		
Parathion-methyl	ND ppm	Diazanone	ND ppm		
Metalaxyl	ND ppm	Propiconazole	ND ppm		
Chlorantriliprole	ND ppm	Spinosad A	ND ppm		
Spiroxamine	ND ppm	Pyrethrin 1	ND ppm		
Phosemet	ND ppm	Trifloxystrobin	ND ppm		

# Moisture Analysis

## Moisture Summary

Mass(g)	%Solid	%Water
Received: NT		
Dehydrated : NT		

# Information

TEST	LOQ	unit
Terpene	100	ppm
Residual Solvent	80	ppm
Pesticides	0.01	ppm
Mold/Mildew	100	cfu/g
Potency	0.1	%