



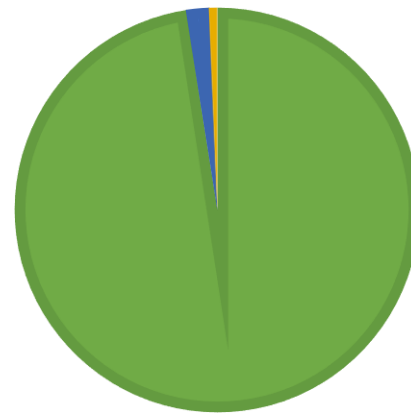
**Sample Name**      **Crush'n'Fruit**  
**Batch #:**          36-10616-01  
**Customer Name**    OM Extracts  
**Sample ID:**        PD160112-012  
**Sample Type:**     Concentrate  
**Date Tested:**      1/15/2016  
**Expiration Date:** 4/14/2016

## Potency Test

### Cannabinoid Summary

<b>Total THC</b>	<b>Δ9THC+THCa</b>	<b>74.55%</b>
<i>Total Potential Δ9THC</i>	660.003 mg/g	66.00%
<b>Total CBD</b>	<b>CBD+CBDa</b>	<b>1.39%</b>
<i>Total Potential CBD</i>	12.1903 mg/g	1.22%
<b>Total CBN</b>	<b>Total CBN</b>	<b>0.46%</b>
<i>Total Potential CBN</i>	4.6 mg/g	0.46%

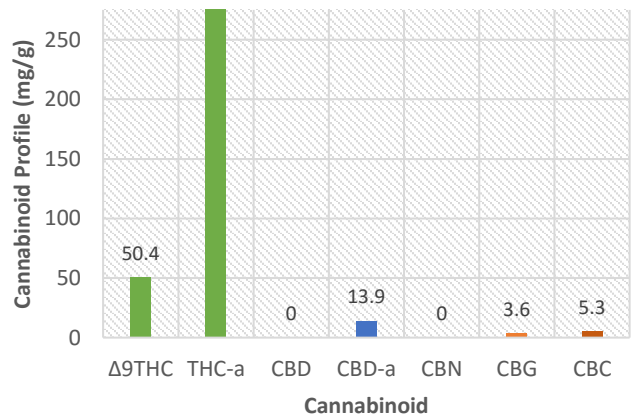
Cannabinoid Ratio  
 ■ Total THC   ■ Total CBD   ■ Total CBN



### Full Cannabinoid Profile

<b>Tetrahydrocannabinol</b>	<b>Δ9THC</b>	<b>5.04%</b>
<i>Total Potential</i>	50.4 mg/g	
<b>Tetrahydrocannabinolic Acid</b>	<b>THC-a</b>	<b>69.51%</b>
<i>Total Potential</i>	695.1 mg/g	
<b>Cannabidiol</b>	<b>CBD</b>	<b>0.00%</b>
<i>Total Potential</i>	0 mg/g	
<b>Cannabidiolic Acid</b>	<b>CBD-a</b>	<b>1.39%</b>
<i>Total Potential</i>	13.9 mg/g	
<b>Cannabinol</b>	<b>CBN</b>	<b>0.46%</b>
<i>Total Potential</i>	0 mg/g	
<b>Cannabigerol</b>	<b>CBG</b>	<b>0.36%</b>
<i>Total Potential</i>	3.6 mg/g	
<b>Cannabichromeone</b>	<b>CBC</b>	<b>0.53%</b>
<i>Total Potential</i>	5.3 mg/g	
<b>Total Active Cannabinoids</b>		<b>77.29%</b>
<i>Total Potential</i>	685.693 mg/g	

### Cannabinoid Summary



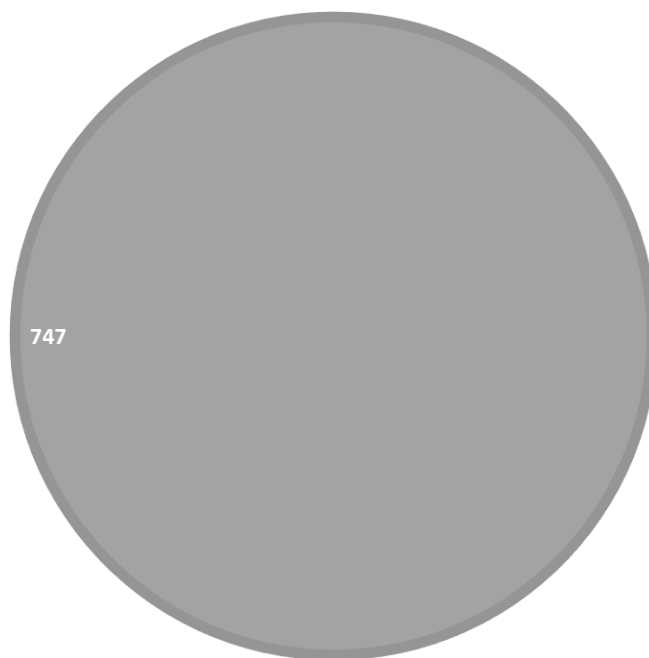
# Residual Solvent

## Residual Solvent Summary

Total Residual Solvent 747 ppm

Methanol	ND	ppm
Ethanol	747	ppm
Acetone	ND	ppm
Isopropanol	ND	ppm
Acetonitrile	ND	ppm
Methylene Chloride	ND	ppm
n-Hexane	ND	ppm
Tetrahydrofuran	ND	ppm
Benzene	ND	ppm
Heptane	ND	ppm
Toluene	ND	ppm
Ethane	ND	ppm
Propane	ND	ppm
Isobutane	ND	ppm
Butane	ND	ppm
Isopentane	ND	ppm

## Residual Solvent Summary



# Terpene Profile

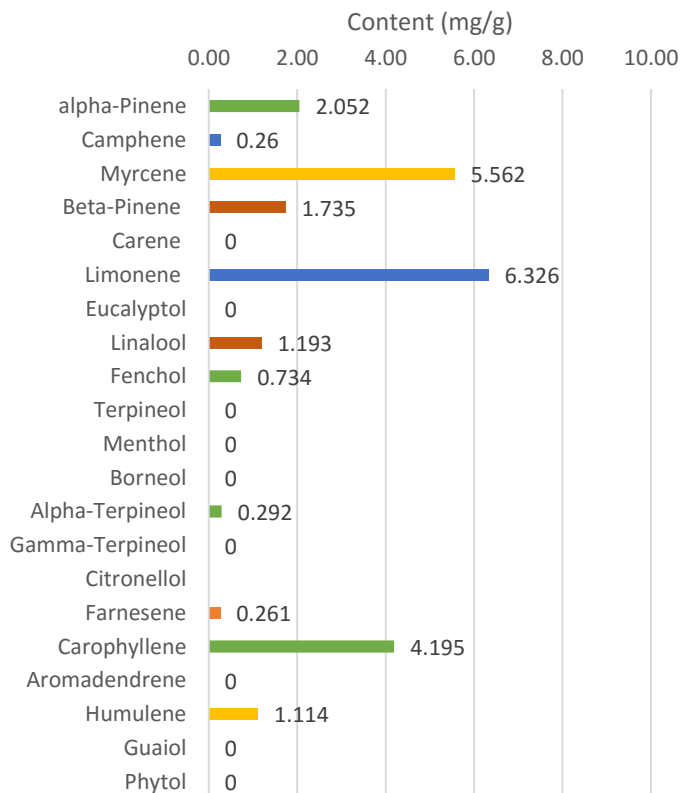
## Terpene Summary

Total Available Terpenes 2.37%  
Total Potential 23.724 mg/g

\* Out of Range

alpha-Pinene	2.052 mg/g	0.21%
Camphene	0.26 mg/g	0.03%
Myrcene	5.562 mg/g	0.56%
Beta-Pinene	1.735 mg/g	0.17%
Carene	0 mg/g	0.00%
Limonene	6.326 mg/g	0.63%
Eucalyptol	0 mg/g	0.00%
Linalool	1.193 mg/g	0.12%
Fenchol	0.734 mg/g	0.07%
Terpineol	0 mg/g	0.00%
Menthol	0 mg/g	0.00%
Borneol	0 mg/g	0.00%
Alpha-Terpineol	0.292 mg/g	0.03%
Gamma-Terpineol	0 mg/g	0.00%
Citronellol	0 mg/g	0.00%
Farnesene	0.261 mg/g	0.03%
Carophyllene	4.195 mg/g	0.42%
Aromadendrene	0 mg/g	0.00%
Humulene	1.114 mg/g	0.11%
Guaiol	0 mg/g	0.00%
Phytol	0 mg/g	0.00%

## Terpene Summary



## Microbial Analysis

### Microbial Summary

Total Mold and Mildew	<10,000 cfu/g	Pass
Total Aerobic Plate Count	<10,000 cfu/g	Pass

## Pesticide Screening

### Pesticide Summary

Total Pesticide Content                      ND ppm                      Pass                      OR Limit: 0.1ppm

Flonicamid	ND ppm	Azoxystrobin	ND ppm	Clofentazine	ND ppm
Oxamyl	ND ppm	Malathion	ND ppm	Spionsad D	ND ppm
Methomyl	ND ppm	Acequinocyl	ND ppm	Piperonyl Butoxide	ND ppm
Thiamethoxam	ND ppm	Methiocarb	ND ppm	Chlopyrifos	ND ppm
Dimethoate	ND ppm	Paclbutrazol	ND ppm	Spiromensifen	ND ppm
Imidacloprid	ND ppm	Fludioxonil	ND ppm	Hexythiazox	ND ppm
Acetamiprid	ND ppm	Boscalid	ND ppm	Etoazole	ND ppm
Alidcarb	ND ppm	Bifenazate	ND ppm	Cypemethrin	ND ppm
Thiacloprid	ND ppm	Myclobutanil	ND ppm	Pyridaben	ND ppm
Propoxur	ND ppm	Spirotetramat	ND ppm	Fenpyroximate	ND ppm
Dichlorvos	ND ppm	Fipronil	ND ppm	Bifenthrin	ND ppm
Carbofuran	ND ppm	Fenoxycarb	ND ppm	Etofenprox	ND ppm
Imazalil	ND ppm	Kresoxim-methyl	ND ppm		
Carbaryl	ND ppm	Tebuconazole	ND ppm		
Parathion-methyl	ND ppm	Diazanon	ND ppm		
Metalaxyl	ND ppm	Propiconazole	ND ppm		
Chlorantriliprole	ND ppm	Spinosad A	ND ppm		
Spiroxamine	ND ppm	Pyrethrin 1	ND ppm		
Phosemet	ND ppm	Trifloxystrobin	ND ppm		

## Moisture Analysis

### Moisture Summary

	Mass(g)	%Solid	% Water
Received:	NT		
Dehydrated :	NT		

## Information

TEST	LOQ	unit
Terpene	100	ppm
Residual Solvent	80	ppm
Pesticides	0.01	ppm
Mold/Mildew	100	cfu/g
Potency	0.1	%